

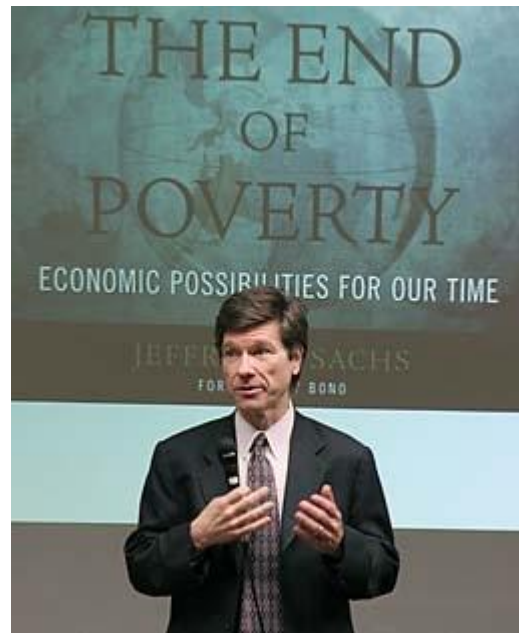
Delivering effective primary
health care with better health
outcomes :

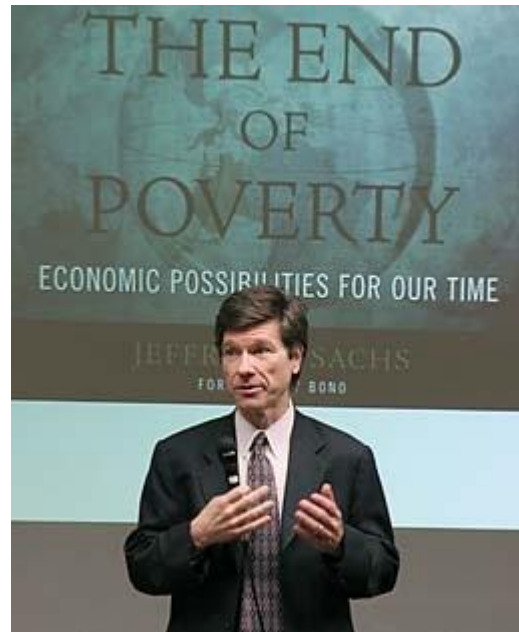
how to get there from here

In 2008 the world “rediscovered”
primary health care

30 years since the Declaration of Alma-Ata

- Last year was 30 years since the **Declaration of Alma-Ata** was adopted at the International Conference on Primary Health Care convened by the WHO in Almaty, then in the USSR, now in Kazakhstan, in September 1978
- Goal of “Health for all by the year 2000.”
- “Primary health care is the key to attaining this target as part of development in the spirit of social justice.”





- “We missed the target of health for all by the year 2000 by a long shot.”
 - Jeffrey Sachs, Scientific American Magazine, December 16, 2007

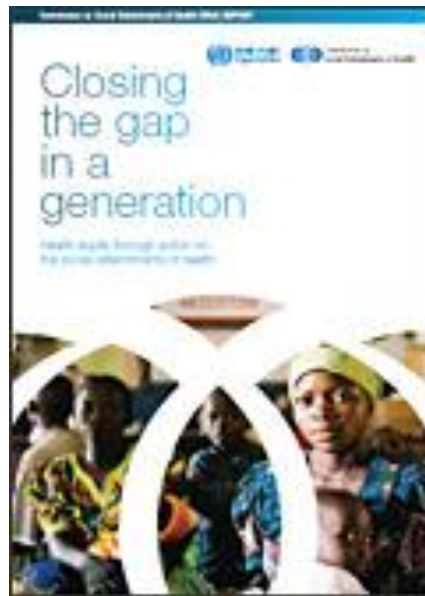


WHO Director-General

Chan M. Return to Alma Ata. *Lancet*, 2008; 372:865-866.

- “Decades of failure to invest in fundamental health infrastructures, services and staff.”
- The focus of international public health moved away from broad-based programs and towards the urgent management of high-mortality emergencies such as HIV/AIDS, tuberculosis and malaria.
- May 2008 – At the 60th WHO World Health Assembly, Director-General Dr Margaret Chan reaffirmed the commitment of the WHO to primary health care

Closing the gap in a generation: health equity through action on the social determinants of health



Final report of the WHO Commission on Social Determinants of Health, presented to WHO on 28 August 2008.

Closing the gap in a generation: health equity through action on the social determinants of health

- The report makes a compelling call for close attention to health in all government policies
- “Gaps in health outcomes are indicators of policy failure”
- The report champions “primary health care as a model for a health system that acts on the underlying social, economic and political causes of ill health.”

The Lancet, September 13, 2008

THE LANCET

Alma-Ata 30 years on:
"Health for all need not be a
dream buried in the past."

See Editorial page 201



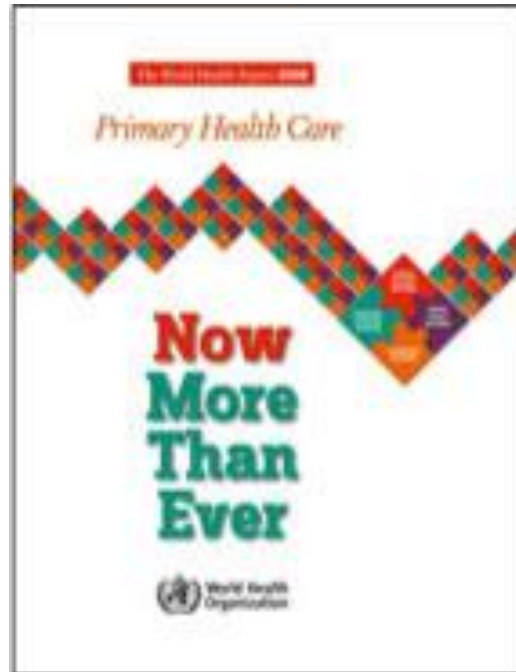
© 2008 The Lancet Publishing Group

Special edition on Primary Health Care

The Lancet Special Edition on Primary Health Care

- Call for the integration of personal health care and public health at the level of the local community

WHO World Health Report



The World Health Report in 2008 was devoted to the reinvigoration of primary health care

Definition of Primary Health Care

- “... Essential **health care** based on practical, scientifically sound, **socially** and **culturally** acceptable methods and technology made **universally accessible** to individuals and families in the communities in which they live through their full **participation** at every stage of development in the spirit of **self-reliance** and **self-determination**.”
- National Aboriginal Health Strategy 1989

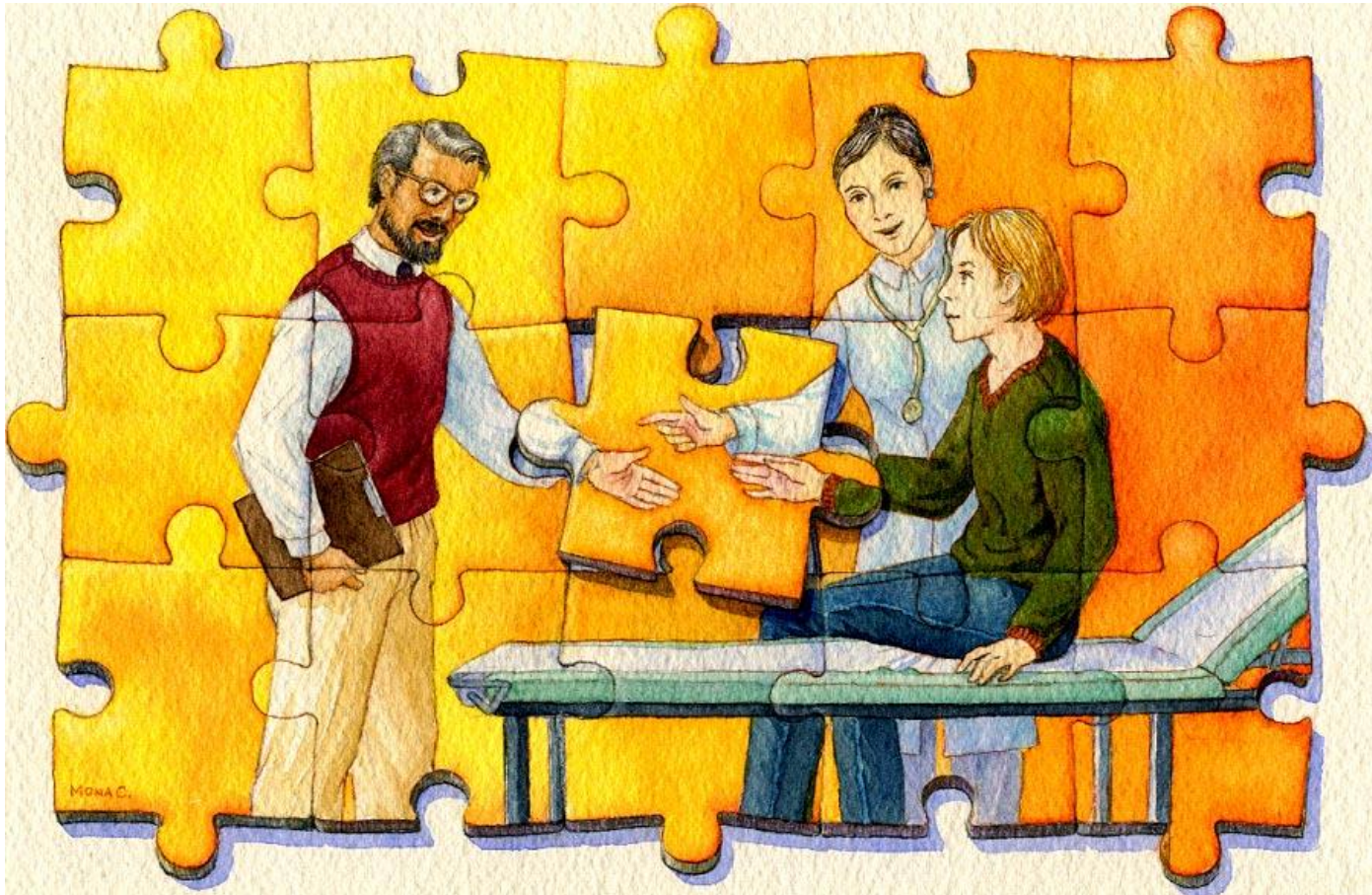
AHCRA's 2005/2007 guide to strengthening primary health care and transforming the healthcare provided to the people of our nation



1. Any reform must ensure equity
2. Community engagement is an essential component of primary health care policy development
3. Health promotion and preventive health care are core components of the work carried out in primary health care
4. Strengthen the role of primary health care in chronic disease management
5. Exploit new technologies
6. Ensure quality and safety
7. Ensure the sustainability of our primary health care services

8. Support and grow our primary health care workforce
9. Oral health
10. Mental health
11. Invest in primary health care and look at the savings you will make
12. Respect the breadth of primary health care
13. Integrate primary health care throughout our health care systems
14. Address the special needs of each group of people within our communities

Integrated primary care: the central piece in the healthcare puzzle



Some challenging messages

- How will the development of Superclinics in 31 scattered locations meet the nation's primary health care needs?
- Every primary care clinic needs the capacity to work within a framework that is relevant, timely and sustainable.
- This needs to be supported by a national plan for capital investment in primary care.

Some challenging messages

- Community engagement and involvement in decision making are core features of primary health care, and this is happening, but we need new ways to move this forward.
- Members of each local community must be joined by policy makers and local health care providers to ensure appropriate governance of local health services, while ensuring that national standards are achieved.

Some challenging messages

- It takes time and ongoing commitment of resources to deliver and maintain quality care.
- Funding systems need reform to support both the time and the rapid changes required to provide comprehensive primary health care, and to allow the further development of multidisciplinary models of care delivery.
- The Medicare system needs structural and timely reform to ensure, for example, that payment mechanisms do not continue to result in discrimination.

Some challenging messages

- Encourage enrollment of patients with their primary care teams to enhance access to multidisciplinary preventive and chronic disease care and make primary care organizations accountable for this.
- Expand workforce capacity by increasing the numbers of existing health professionals being trained, facilitating teamwork, a more flexible use of skills of existing health workers and development of the role of new categories of health workers (such as health assistants in primary care).
- Expand the focus, geographic size and representation of Divisions of General Practice to a wider remit on primary health care.

Some challenging messages

- Team-based care models need careful thought
- Sometimes it may be best to have a single provider
- Research shows that the single most important factor in the successful management of some chronic conditions and mental health problems in some people is the continuity of care provided by a single clinician

**Let's not throw the baby out with
the bath water**



In order to achieve this transformation, Australia needs an agreed National Primary Health Care Policy and an accompanying strategy to allow strong planning for the future

Australian Health Care Reform Alliance, 2005

